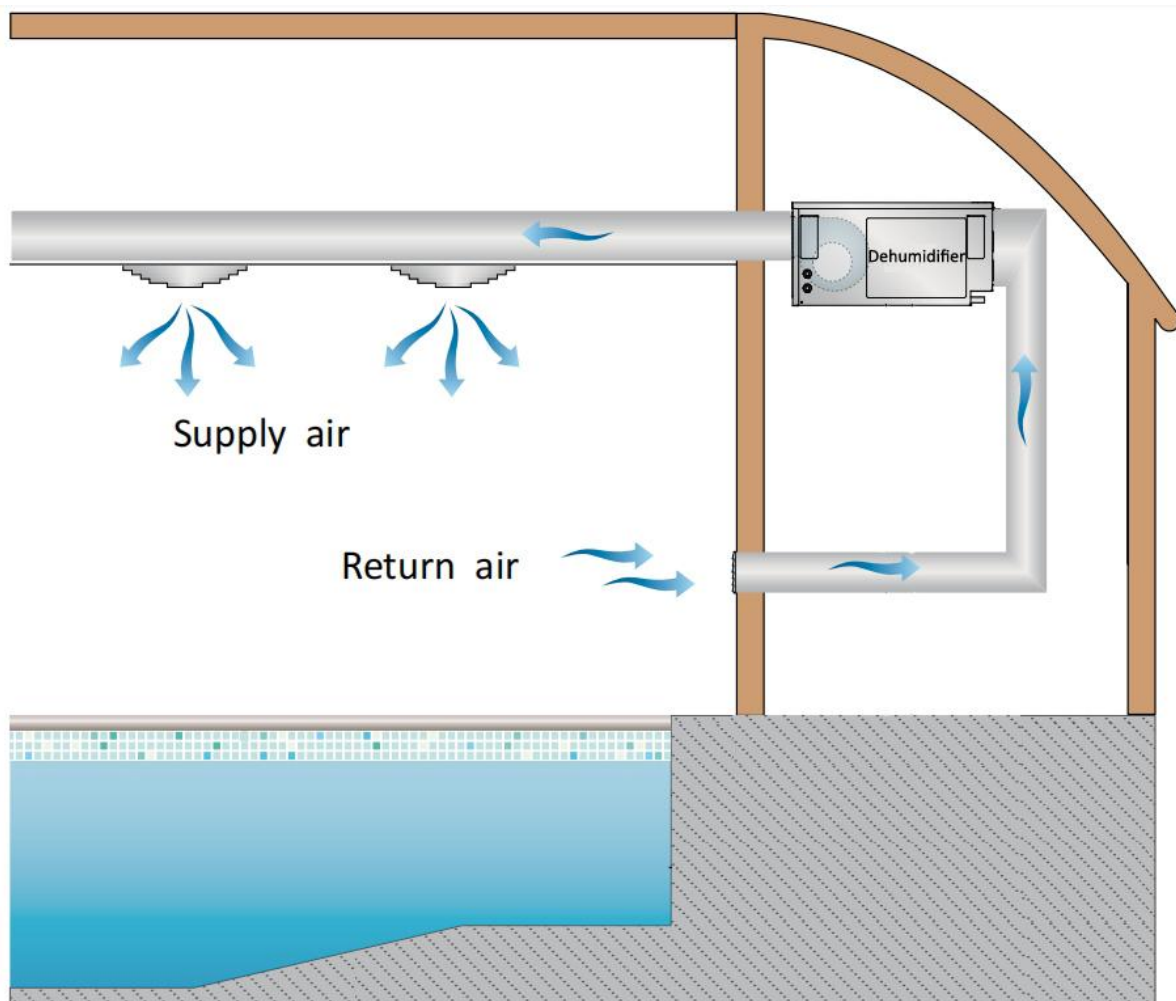


Thermokool

Industrial Air Duct Dehumidifier



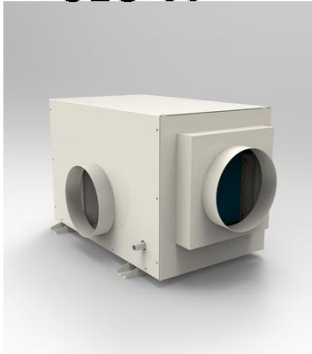
This is air duct/ceiling duct type dehumidifier, which is widely used in
Swimming pool room
Plant Growing room
Warehouse
Household
Commercial location

It working temperature 5~38°C , could control the relative humidity lowest around 35% in high energy efficiency, and easy to installation.

Thermokool

Industrial Air Duct Dehumidifier

CLG-50



CLG-90



CLG-138



CLG-168



Model	CLG-50	CLG-90	CLG-138	CLG-168
Dehumidify Capacity	50L/day(30. C RH80%)	90L/day(30. C RH80%)	138L/day(30. C RH80%)	168L/day(30. C RH80%)
Power Source	220V/50hz	220V/50hz	220V/50hz	220V/380V/50hz
Power input	980W	1260W	1800W	3800W
Circulation volume	500m3/h	800m3/h	1000m3/h	1600m3/h
External controller	Box 86*86mm,the standard wiring length is 6 meters			
Ambient temperature	5-38°C	5-38°C	5-38°C	5-38°C
Static pressure	70Pa	80Pa	80Pa	80Pa
Outer diameter of drainage	Φ14mm	Φ14mm	Φ14mm	Φ14mm
Air inlet and outlet	Front inlet and Left outlet	Front inlet and Back outlet	Front inlet and Back outlet	Front inlet and Back outlet
Inlet and outlet air flanges (mm)	Φ188 (Outer Diameter)	Inlet: 400*320 Outlet: 190*220	Inlet: 500*320 Outlet: 190*220	Inlet & Outlet: 450*500
Dimension (width x depth x height)	655*419*391mm	900*580*480mm	900*660*480mm	1003*700*690mm
Net weight	36kg	53kg	66kg	125kg

- a. Air duct / Ceiling mounted style, with G4 filter
- b. Auto Self defrost .
- c. digital display, which has 6 meter external cable, remote control in option
- d. Rotary compressor. 3min-delay to protect compressor
- e. Drainage by external hose, continuous drainage function
- f. Sensor fault indicator function

Thermokool

Industrial Air Duct Dehumidifier

CLG-192

CLG-240

CLG-360

CLG-480



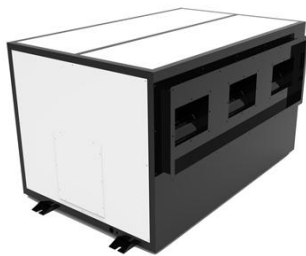
Model	CLG-192	CLG-240	CLG-360	CLG-480
Dehumidify Capacity	192L/day(30. C RH80%)	240L/day(30. C RH80%)	360L/day(30. C RH80%)	480L/day(30. C RH80%)
Power Source	220V/380V/50hz	220V/380V/50hz	380V/50hz	380V/50hz
Power input	4000W	5800W	10200W	15000W
Circulation volume	2000m3/h	2400m3/h	3600m3/h	5000m3/h
External controller	Box 86*86mm,the standard wiring length is 6 meters			
Ambient temperature	5-38°C	5-38°C	5-38°C	5-38°C
Static pressure	80Pa	80Pa	80Pa	80Pa
Outer diameter of drainage	Φ14mm	Φ14mm	Φ14mm	Φ14mm
Air inlet and outlet	Front inlet and Back outlet	Front inlet and Back outlet	Front inlet and Back outlet	Front inlet and Back outlet
Inlet and outlet air flanges (mm)	Inlet & Outlet: 630×520	Inlet & Outlet: 630×520	Φ188 (Outer Diameter)	Inlet & Outlet: 1000×520
Dimension (width x depth x height)	880*1103*690mm	880*1103*690mm	1270*1103*695mm	1270*1103*695mm
Net weight	145kg	155kg	200kg	260kg

- a. Air duct / Ceiling mounted style, with G4 filter
- b. Auto Self defrost .
- c. digital display, which has 6 meter external cable, remote control in option
- d. Rotary compressor. 3min-delay to protect compressor
- e. Drainage by external hose, continuous drainage function
- f. Sensor fault indicator function
- g. Phase sequence protection, safe for using.

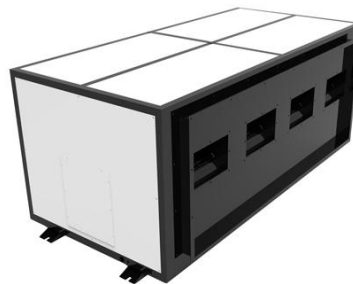
Thermokool

Industrial Air Duct Dehumidifier

CLG-720



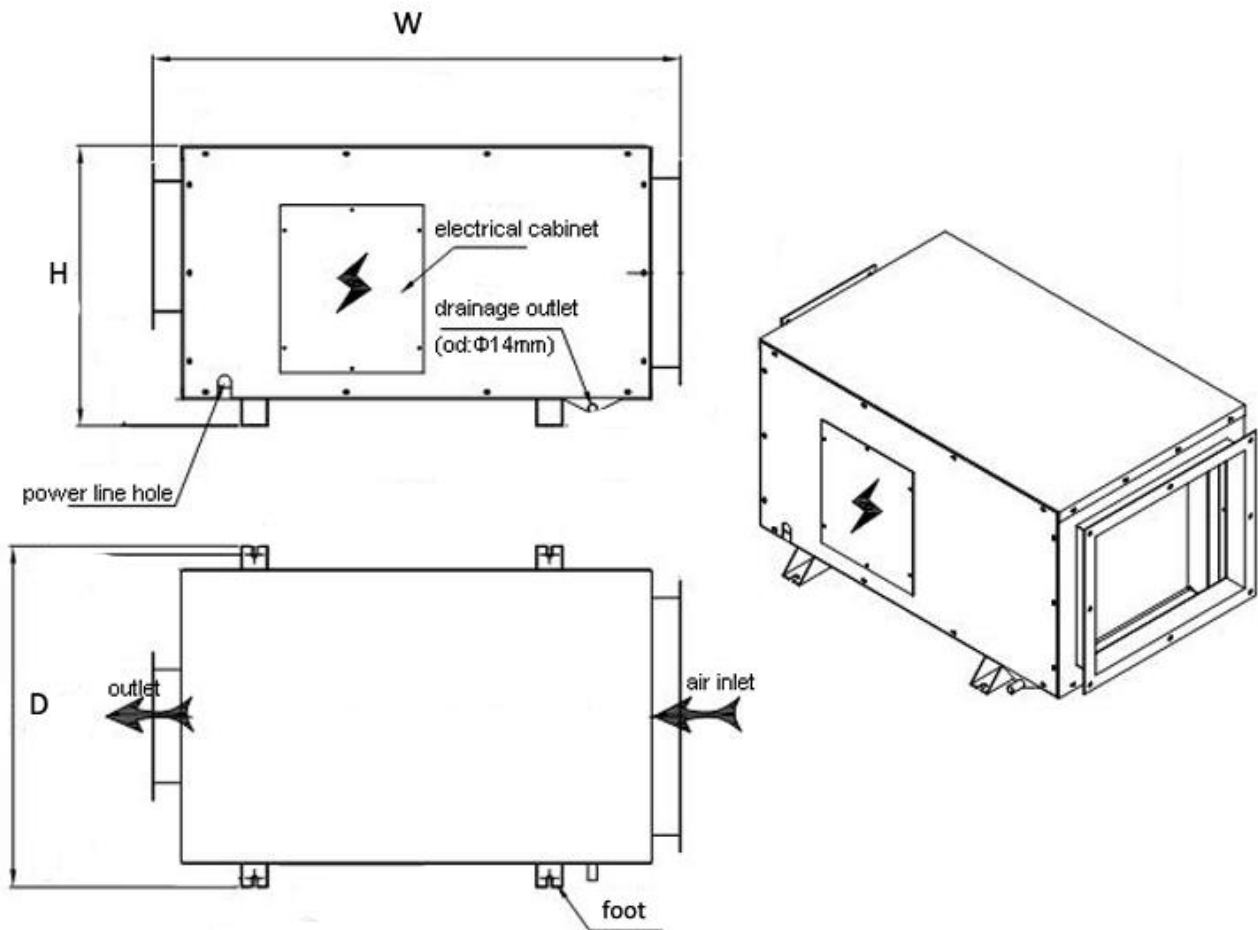
CLG-960



Model	CLG-720	CLG-960
Dehumidify Capacity	720L/day(30. C RH80%)	960L/day(30. C RH80%)
Power Source	380V/50hz	380V/50hz
Power input	16.5KW	22KW
Circulation volume	9000m3/h	12000m3/h
External controller	Box 86*86mm,the standard wiring length is 6 meters	
Ambient temperature	5-38°C	5-38°C
Static pressure	200Pa	200Pa
Outer diameter of drainage	Φ20mm	Φ20mm
Air inlet and outlet	Front inlet and Back outlet	Front inlet and Back outlet
Inlet and outlet air flanges (mm)	Inlet & Outlet: 1400×730	Inlet & Outlet: 1800×700
Dimension (width x depth x height)	1700×1100×930mm	2230×1100×900mm
Net weight	330kg	400kg

- a. Air duct / Ceiling mounted style, with G4 filter
- b. Auto Self defrost .
- c. digital display, which has 6 meter external cable, remote control in option
- d. Rotary compressor. 3min-delay to protect compressor
- e. Drainage by external hose, continuous drainage function
- f. Sensor fault indicator function
- g.Phase sequence protection,safe for using.

Thermokool



Size Chart

Model No.	Width(mm)	Depth(mm)	Height(mm)
CLG-50	655	419	391
CLG-90	900	580	480
CLG-138	900	660	480
CLG-168	1003	700	690
CLG-192	1103	880	690
CLG-240	1103	880	690
CLG-360	1270	1103	695
CLG-480	1270	1103	695
CLG-720	1700	1100	930
CLG-960	2230	1100	900

Thermokool

Installation

